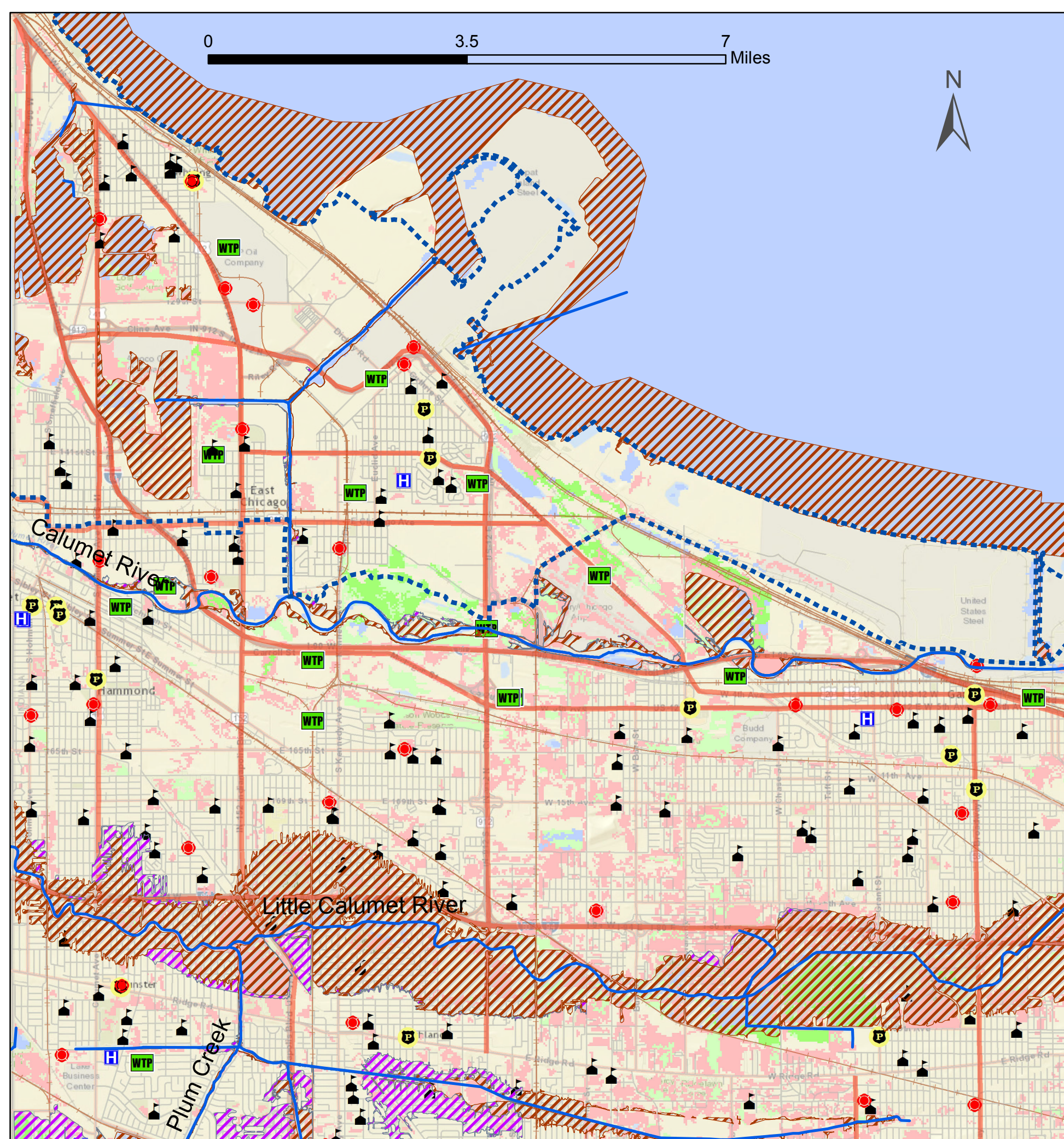


# No Adverse Impact

Whiting / East Chicago, IN Workshop - Hazards



## Critical Facilities

- Fire / EMS Station
- Ⓜ Hospital
- Ⓟ Law Enforcement
- 🏫 School selection
- 🏭 Wastewater Treatment

## FEMA Flood Zone

- ▨ 0.2% Annual Chance of Flooding
- ▨ 1% Annual Chance of Flooding

## Infrastructure

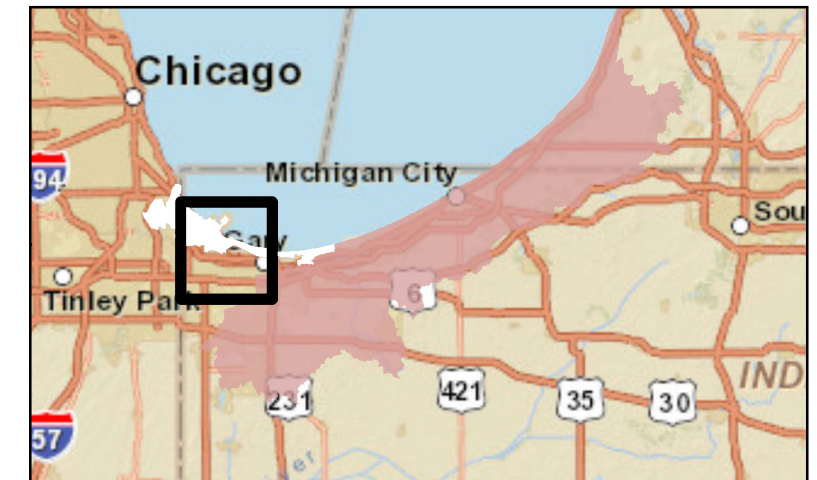
- Railroad
- Streets
- State Road

## Land Cover

- Water
- Parks / Open Developed
- Forest / Grassland
- Pasture / Crop

## Hydrography

- Southwestern Lake Michigan River Basin
- Calumet River Watershed
- Stream Network



Data Sources: Federal Emergency Management Agency 'Multi-Hazard Mitigation Planning'; (Critical Facilities); National Wetland Inventory: (Wetlands 2014); National Land Cover Database: (Land Cover); National Hydrography Dataset (24K Hydro Stream Network); Indiana Department of Transportation (Critical Infrastructure).