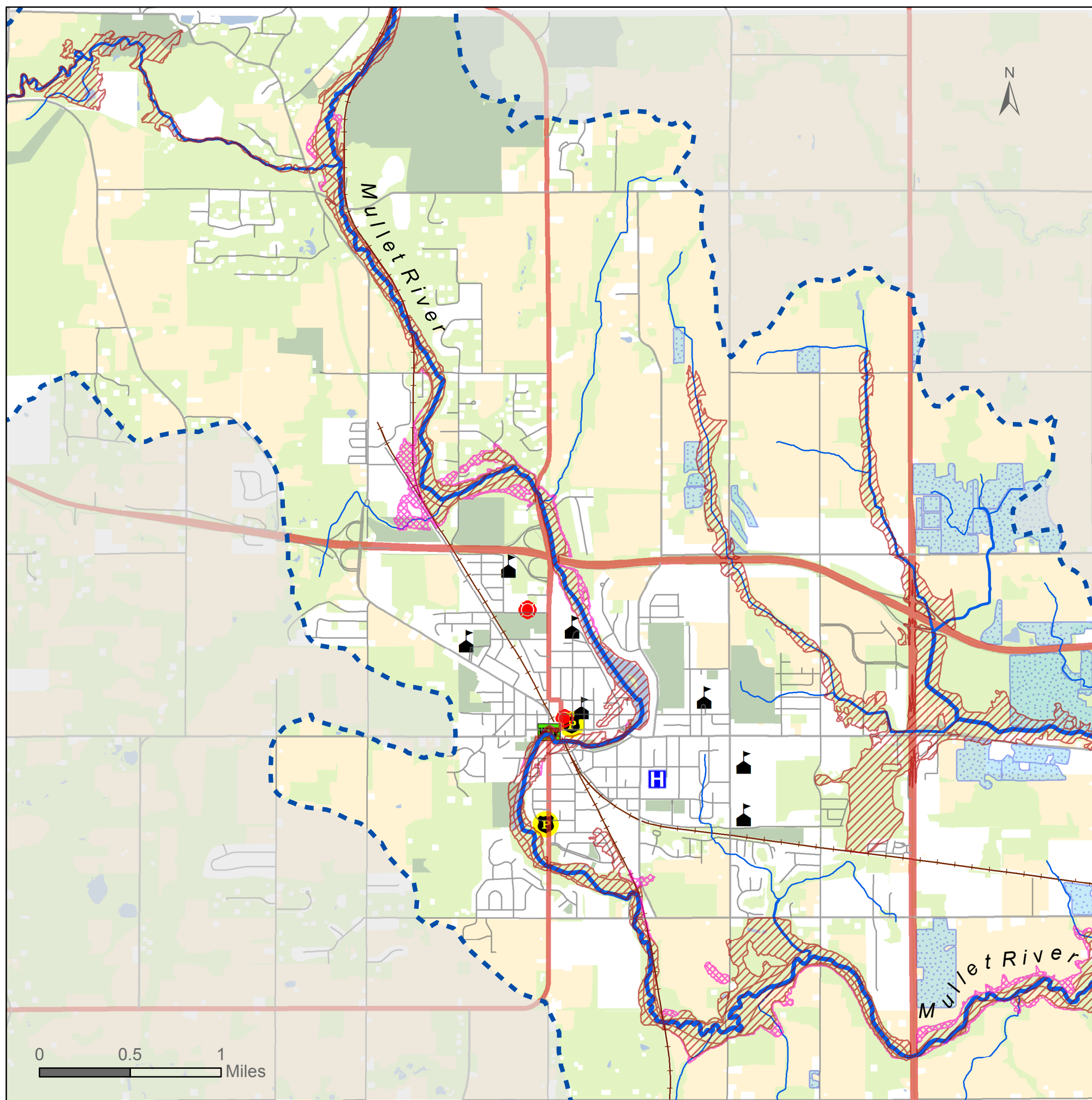


No Adverse Impact

Milwaukee, WI Workshop - Hazards



Critical Facilities

- Fire / EMS Station
- Hospital
- Law Enforcement
- School
- Wastewater Treatment

Flood Hazard Areas

- Repetitively Too Wet to Farm

FEMA Flood Zone

- 1% Annual Chance of Flooding
- 0.2% Annual Chance of Flooding

Infrastructure

- State Roads
- County Road
- Streets
- Railroad

Future Landuse (20yr)

- Parks
- Forested / Open
- Pasture / Crop
- Water

Hydrography

- Sheboygan River Basin
- Mullet Watershed
- Stream Network



Data Sources: Wisconsin Department of Natural Resources: (Critical Facilities); Sheboygan County GIS (Plymouth Future Landuse 20 year projection); National Hydrography Dataset (24k Hydro Stream Network); US Census Bureau (TIGER roads network); Federal Emergency Management Agency (FEMA Flood Zones DFIRM); J. Nelson TNC Wisconsin (Too wet to farm).

Map created August 2014. Copyright The Association of State Floodplain Managers and The Nature Conservancy